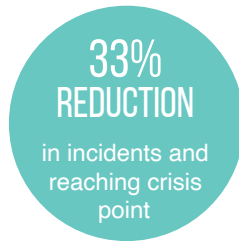




Friendship.
Belonging.
Independence.
Support.



OUR IMPACT



*Data is from the period January to October 2022. All other statistics are as reported by parents / caregivers, November 2022. Outcomes independently verified by Social Value Business. For further information, please visit our website.



HELP US PROVIDE A LIFELINE FOR FAMILIES LIVING WITH DISABILITY

If your organisation serves families in Staffordshire, you could benefit from partnering with our unique charity which supports children and their families living with disability. Your support can extend our impact, fund vital equipment and provide a safe haven for young people.

WHO WE ARE

Picture the scene: a teenager with autism discovers the joy of riding a bike for the first time; a young boy with a learning disability gazes in awe at 1.5 acres of green space where he can play in independence and safety; an exhausted parent struggling to cope, discovers a vital place of respite and makes lifelong friends.

This is the magic of Our Space – a hidden gem in the heart of the city where young people and their families can find independence, emotional support and a social life. It's a place filled with energy and laughter, where people can be themselves. A 'home from home' where new experiences are gained and memories made.

WHAT WE OFFER

- Sessions for disabled children and adults of all ages
- Tailored support delivered by a highly skilled team
- Play sessions for individuals and groups
- 1.5 acres of outdoor space with play equipment
- Indoor soft play, craft room and playroom
- Accessible facilities
- Large kitchen

"The fact our employer allows us the time to volunteer is really valuable; I appreciate the opportunity to meet new people and make a positive difference."

Gary Wainwright,
Wincanton for Screwfix



THE DIFFERENCE YOU CAN MAKE

Since 2016, we've supported thousands of young people and their families who are living with a disability. We receive very little government funding and rely on organisations like yours to help make this possible.

With the right support, we have ambitions to:

- Refurbish our outdoor play area with new structures that stimulate play.
- Add new equipment including a wheelchair accessible swing and roundabout.
- Broaden our play sessions, with tailored sessions aimed at children and young people with specific disabilities.
- Extend our reach across Staffordshire so that more families are aware of the support we provide.

HOW YOU CAN BENEFIT BY 'GIVING BACK' TO CHARITY

We believe in working with companies who share our values. There are many compelling reasons to get involved.

- Deliver on your Corporate Social Responsibility or Social Value strategy.
- Boost engagement: 76% of staff that are given the opportunity to take part in community volunteering say it has a positive influence on how they feel about their employer.*
- Benefit from an improvement to and emphasis on employee wellbeing.
- Be associated with supporting children, young people and families across Staffordshire, with opportunities for joint PR and marketing.
- Improve your services and working culture, with a greater knowledge of diversity, inclusion and accessibility.
- Enhance 'job relevant' skills and a positive team ethos through volunteering.
- Build your community network, with opportunities to meet local families and regional stakeholders.
- We are happy to discuss additional opportunities, such as hosting a staff event at our centre.

(*Source: Employee Volunteering CIC)

WHAT YOU CAN EXPECT

- ✓ Impact reports
- ✓ Social media mentions
- ✓ Invitations to events
- ✓ Case studies and photos
- ✓ And more...

BECOME A CHARITY PARTNER

A longer-term commitment of a year or more allows us to plan ahead and work in meaningful partnership. We can work with you to devise a calendar of activities and agree how your support will be used, giving you highlights to share throughout the year.

MAKE A ONE-OFF DONATION

£150

could fund a 3 hour play session for 8 young people with a disability

£250

could fund a specialist provider such as 'The Animal Man' to attend a session

£500

could fund a range of toys and games for use at our sessions

£750

could pay for a specialist tricycle

£1000

could pay for a Christmas Party and Halloween Party for our families

£4500

could pay for specialist staff to run our weekly Saturday family session for a year

£7500

could pay for a wheelchair-accessible swing



PAYROLL GIVING

Payroll giving is a great employment benefit to offer your team. It provides a simple, tax-efficient way to give a monthly gift.



HOST A FUNDRAISER

Ever fancied a team trek up Snowdon? A bike ride challenge? Or perhaps just an excuse for an office social? The funds you raise will be greatly appreciated by the families we support. Some companies choose to 'match fund' their employees' efforts, stretching the impact even further.



STAFF VOLUNTEERING

We always need volunteers to help us maintain our amazing spaces and play equipment. It's a chance for team bonding and a brilliant day out of the office. We also offer skilled volunteering for individuals who can give dedicated time to help with marketing, IT, finance and more.

THANK YOU!

The team are very grateful for your support and consideration.

www.ourspacestaffs.co.uk office@ourspacestaffs.org.uk

Charity number 1169347

