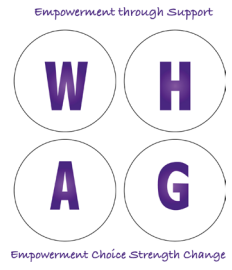


# Women's Housing Action Group

Empowerment through support



## Social Impact and Value



Women's Housing Action Group offers supported accommodation and domestic abuse support in the areas of Rochdale, Bury, Cheshire West and Chester and Wigan. We also deliver a signposting service, court support, self-help programmes, workshops, talking therapy and resettlement support.

### Core community services:



#### Health and wellbeing



- An increase in happiness and positivity
- Reduction of anxiety and depression
- Increased confidence and motivation
- Increased self-esteem
- Increased assertiveness
- The reduction in health inequalities
- Positive change to mental health for clients and their families

#### Education & Skills



- Increased educational attainment
- Increased knowledge, skills and awareness of employment training opportunities
- Increase in life skills
- Improved parenting and situation
- Increased knowledge and skills to manage personal finances

#### Crime & Justice



- Increased sense of safety
- Reduction in anti-social behaviour

What has changed?

#### Gained employment

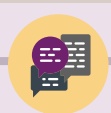
- Clients have accessed new volunteering opportunities
- Increased employability skills
- Building of career aspirations



#### Employment & Volunteering

#### Improved communication

- The reduction in social isolation
- An increase in active citizenship
- An increase in engagement in social and community activities
- The development of positive peer support networks and friendships



#### Social & Community

#### Increased financial confidence

- Reduced rent arrears
- Improved tenancy management
- Permanent home



#### Housing

# Our Social Impact and Value

## Health and Wellbeing

Improvements in physical and emotional health as well as self-perceived levels of happiness and self-esteem.

420 people needed less Crisis intervention

£37,961 cost saving in Anger Management courses

79% clients making increased positive choices about their wellbeing

The overall Health and Wellbeing Value equates to

£924,898

with a cost saving to the public purse of

£452,687

in health interventions per year.

## Education and Skills

Individuals going on to access additional education or skills

233 clients gained new qualifications

75%

gained skills and knowledge to resolve welfare and official issues

£1,612,588 potential saving to Local Childrens Services in preventing children from being taken into care

Value to the community created in education and skills =

£1,815,430

## Crime and Justice

Value relating to reduction in policing, ASB and justice costs

57%

reduction in anti-social behaviour

£512,777

cost saving in DV related Police intervention

420

victims of Domestic Abuse successfully secured non-molestation orders

## Housing

Value relating to reduced risk of eviction, better tenancy sustainment and reduced escalating debt

327

people obtained permanent accommodation

£409,863

saving in temporary accommodation costs

187

clients have avoided or reduced debt

29%

avoided eviction through better management of tenancies

£540,384

cost saving to Housing Associations and housing departments

## Employment and Volunteering

Value created through employment readiness and DWP cost saving

187

people supported back to employment, creating a cost saving of

**£103,664**

in JSA

46% employment ready



29%

supported to volunteer in the community, creating **£60,752** of local social capital

**£700,174**

Employment and Volunteering Value created



## Social and Community

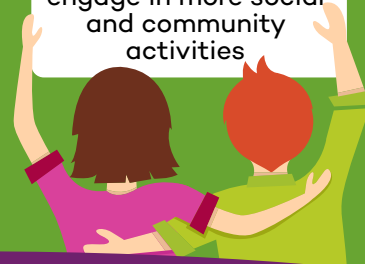
The development of community cohesion and social mobility

54%

of clients more included in society

88%

gained new friendships and engage in more social and community activities



**£1,094,377** created in Social and Community Value



980

people reported healthier relationships



For every



£1 invested there is

**£4.84** created in Social Value

**£5,919,163**

forecasted Financial Value per year

## Our Social Pledges

**Health and Wellbeing**  
WHAG pledge to support families to strengthen their emotional, psychological and physical health and reduce negative influences on their health.

**Social and community**  
WHAG pledge to empower families to become less excluded and isolated within the community by supporting them to develop positive peer networks and become more socially active and engaged.

**Housing**  
WHAG pledge to work in partnership with Housing Associations and housing providers, to support families to sustain their tenancy in communities of their choice.



**Employment and Volunteering**  
WHAG pledge to develop relationships and work with local partners to promote opportunities of sustainable employment and access to volunteering, within WHAG and across the community.

**Education and skills**  
WHAG pledge to increase awareness, develop knowledge and help create skills that will support families to make informed positive life choices.

**Crime and Justice**  
WHAG pledge to build on families' strengths to reduce vulnerability at home and in the community.

**Economic**  
WHAG pledge to work in partnership with specialist debt and financial planning providers to support clients to reduce financial vulnerability.

Social Value Quality Mark has been awarded in recognition of WHAG undertaking an evaluation and forecast of their impact and value. Awarded by Social Value Business.