



Venture Arts

Social Impact and Value



Venture Arts specialises in visual arts. We run hundreds of inclusive arts workshops which support people with learning disabilities to play a valued role within the contemporary arts world. Our professional arts studio in Manchester delivers sessions in photography, art as environment, textiles, technology, ceramics, drawing/painting, printmaking, 3D and film.

Community activities:



Health and Wellbeing

- An increase in happiness and positivity
- Reduced anxiety
- Increased confidence and motivation
- Increased self-esteem/self worth
- Increased assertiveness
- An increase in physical activity
- Positive change to mental health for artists and their families

Education and Skills

- Increased educational attainment
- Exhibited work /taken part in shows
- Increased awareness of others
- Increase knowledge, skills and awareness of development opportunities
- Increase in life and social skills

Employment and Volunteering

- Gained temporary employment
- Artists have accessed new volunteering opportunities
- Increased employability skills
- Building of career aspirations

Housing

- Improved home organisation, routine and structure
- Increased independence

Social and Community

- An increase in active citizenship
- Confidence to share skills and support others
- An increase in engagement in social and community activities
- The development of positive peer support networks and friendships
- Improved communication
- A reduction in social isolation

OUR SOCIAL IMPACT AND VALUE

HEALTH AND WELLBEING

Improvements in **physical and emotional health** as well as self-perceived levels of happiness and self-esteem.

92% of artists gained a sense of belonging

62% less anger and disruption

£103,406

cost saving in social care interventions



The overall Health and Wellbeing Value equates to **£343,555**, with a cost saving to the public purse of **£83,095** in health interventions per year.

EDUCATION AND SKILLS

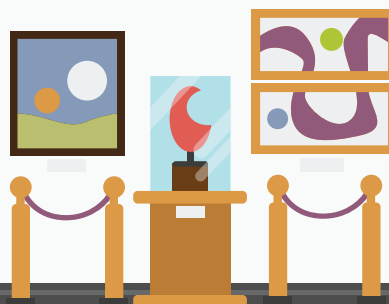
Individuals going on to access **additional education or develop skills**

46 artists gained new qualifications



Value to the community created in education and skills = **£439,515**

100% gained skills to independently access information and guidance



86 artists with a learning disability exhibited their work =

£42,140 Cultural Value to society

SOCIAL AND COMMUNITY

The development of **community integration and social confidence**

69%

feel more included in society

100%

gained new friendships and engage in more social and community activities = **£58,695 social value**

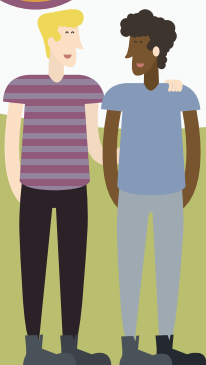
92%

Improved communication

£257,945

created in Social and Community Value

external family social group established



HOUSING

Value relating to **improved home life and independent living**



62%

improved organization, routine and structure at home

46%

increased independence = **£74,122** reduction in homecare costs



53

artists and families experienced less stress at home



EMPLOYMENT AND VOLUNTEERING

Value created through **employment experience and volunteering**

69%

of Artists gained employment skills

£131,226

Employment and Volunteering Value created

46%

supported to volunteer in the community, creating £19,604 of local social capital

27 Artists gained paid employment

£1,276,509

forecasted Financial Value per year.

For every **£1** invested there is **£3.68** created in Social Value

OUR SOCIAL PLEDGES



ARTS AND CULTURE:

We pledge to enable learning disabled people to play an active role in arts and culture on a regional, national and international level.



HEALTH AND WELLBEING:

We pledge to improve people's health and wellbeing through being active, creative participants in the arts, helping them develop confidence, self-worth and lasting friendships.



EMPLOYMENT AND VOLUNTEERING:

We pledge to improve opportunities for learning disabled people to work and volunteer in Manchester's cultural organisations and schools, and to be recognised for their valuable contribution to the workplace.



SOCIAL AND COMMUNITY:

We pledge to support learning disabled people to have choice and make positive connections with others and with their communities and in doing so, reduce marginalisation and isolation.



LEADERSHIP:

We pledge to be leaders in our field and advocate for learning disabled people, in turn helping them to speak out and be confident as leaders and self-advocates in the arts, society and their communities.



EDUCATION AND SKILLS:

We pledge to develop learning disabled people's skills both artistically and in other areas of life, enabling them to participate more fully in culture, employment and society.

Social Value Quality Mark has been awarded in recognition of Venture Arts undertaking an evaluation and forecast of their impact and value. Awarded by Social Value Business.